

THE PEMBERTON AND DISTRICT MUSEUM AND ARCHIVES



Pemberton &
District
Museum &
Archives
Society

NEWSLETTER

PembertonMuseum.org



WELCOME TO THE AUGUST 2023 EDITION OF THE PEMBERTON MUSEUM NEWSLETTER!

August might have started cool but as we reach 40 degrees outside, things are also heating up at the Museum! We have been busy hosting a variety of events including our first Toonie Tea of the season, local not-for-profit's meetings and professional development events, and a super fun Harry Potter inspired birthday party.

Our guests have come from near and far and include families from New Zealand, Australia, the Netherlands, Czech Republic, Belgium, France, Germany, Canadians from across the country and Americans from all over the US.

We've also been blessed to have many Pembertonians coming through, exploring the site and learning about the history of their hometown. Our Scavenger Hunts are a big hit with kids from the neighbourhood. They spend an hour or two searching for different artifacts and investigating the exhibits to answer skill testing questions. The giant freezies we give away as prizes are also very popular.

The museum will be open Tuesday to Saturday from 10am to 5pm until the end of the season and we are looking forward sharing the history of Pemberton with all of our guests.

In July we welcomed 455 guests to the site!

Tuesday's Toonie Teas are back!!

Join us on select Tuesday's 2-4PM

Upcoming Toonie Teas:

Tuesday, September 12: Patricia Ritchie shares her family history and traditional knowledge

Tuesday, September 19: Local songbird Susan Holden

THE PEMBERTON & DISTRICT MUSEUM & ARCHIVES INVITES YOU TO JOIN US FOR

TUESDAY'S TOONIE TEAS

Presenting:

Highly Strung

with
Brenda McLeod
&
Shawn Wallace

Join us at the Pemberton Museum for homemade baked goods, tea & live local music on Tuesday August 22nd from 2pm-4pm !!

7455 Prospect St, Pemberton, BC

DATE NIGHTS ARE BACK!

Date Night with Sheri Marie Ptolemy

Keep an eye out for details regarding ticket information and pricing

Join us Thursday, September 14th for dinner accompanied by acoustic singer/song writer: Sheri Marie Ptolemy 6:00PM-9:00PM

www.sherimariptolemy.com
[@sheriptolemymusic](https://www.instagram.com/sheriptolemymusic)
[Sheri Marie Ptolemy](https://www.facebook.com/sherimariptolemy)
[@sheriptolemymusic](https://www.instagram.com/sheriptolemymusic)

Date Night with That Elvis

The long lost son of Elvis September 21st

Join us Thursday, September 21st 6:00PM-9:00PM

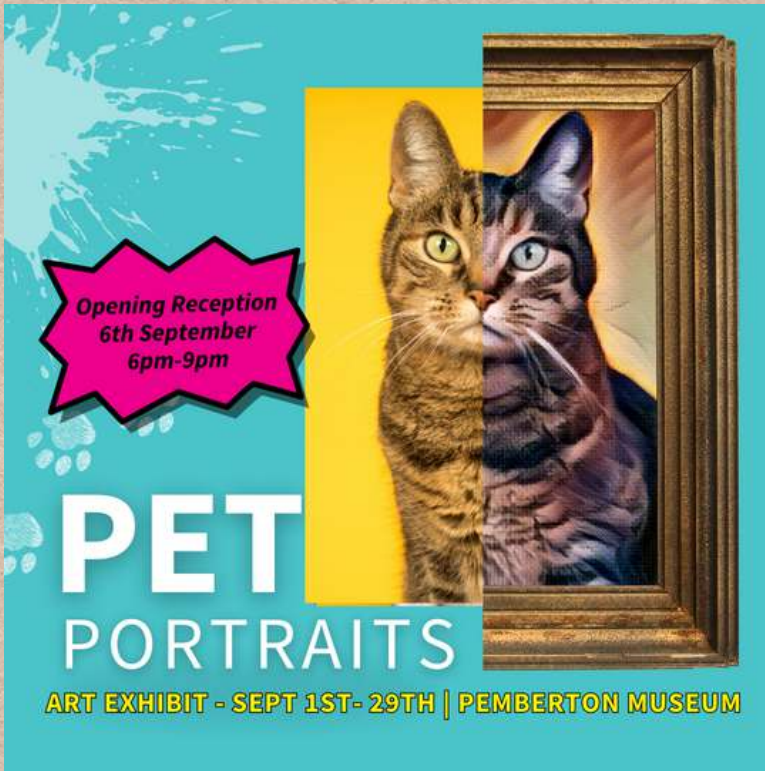
www.thatelvis.ca
[@ThatElvis](https://www.instagram.com/ThatElvis)

Date Nights:

The museum is partnering with local restaurants to provide an amazing local food and entertainment experience. Stay tuned via social media or our website for more details.

Menus and tickets will be available Saturday, August 19th.

PET PORTRAITS ART EXHIBITION - SEPTEMBER 1-29



Opening Reception
6th September
6pm-9pm

PET PORTRAITS

ART EXHIBIT - SEPT 1ST- 29TH | PEMBERTON MUSEUM

The poster features a central image of two cats, one brown and one black, looking out from a framed portrait. The background is a vibrant teal with white paw prints.

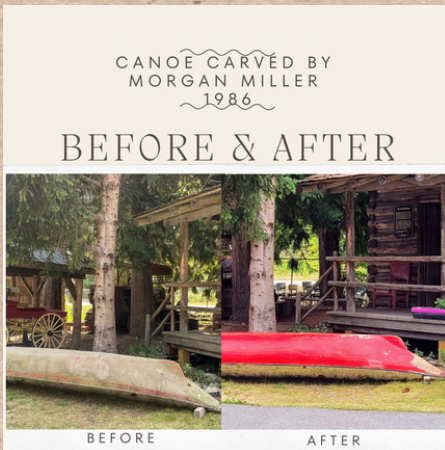
The Pemberton Museum is once again partnering with the Pemberton Arts Council for a pawsitively fantastic new exhibit that celebrates the bond between humans and our furry friends. From funky farmyard chickens and horses, to adorable feline furballs and pups big and small, this show's got them all!



Don't miss our Opening Night on
Wednesday, September 6th from 6pm-9pm



NEW OBJECTS DONATED TO OUR COLLECTION



The Pemberton Museum is always honored when gifted beloved objects from our community.

This summer we have been fortunate to receive a hand-carved canoe and vintage piano from the Walker family, who bought the farm formerly owned by the McEwan family, and a hand-crafted hope-chest, two spoons, and a collection of vintage photos from the estate of Carol Morphy.



We look forward to sharing these objects and their stories with our guests and the Pemberton community once they are processed.

If you have artifacts, clippings or photos that tell a story of Pemberton and would like to donate them to the museum please email our curator with a couple photos to: info@pembertonmuseum.org

15-30 AND INTERESTED IN MUSEUM COLLECTIONS & ARCHIVING?

The museum continues to search for a Museum Collection / Guest Services Coordinator for the 2023 season. This position is full-time (32 hours/week) and funded in part by Young Canada Works, a program run by the Canadian Museums Association. Due to the nature of the grant, candidates must be between the ages of 15 - 30 and be returning to school in the next 12 months. For a job description, list of grant requirements and more information about working at the museum, visit our website:

www.pembertonmuseum.org/blog/2023/4/27/museum-collection-guest-services-coordinator/

If you'd like to join our fun and dynamic team, send your resume and a cover letter to "Personnel Committee" at info@pembertonmuseum.org

LOOKING FOR PHOTOS OF BENCHLANDS SKI HILL

Attention Pemberton Skiers!!!

The Pemberton Museum is on the hunt for photos or stories of the community ski hill known as the Pemberton Benchlands ski hill. The hill was operated by the local Lions Club, operated on the Benchlands hill behind downtown, and included a gas-powered rope tow, bringing the community up a small, moderate-climb hill. Unfortunately due to poor snow conditions and the growing popularity of Whistler, the hill was closed in the 1970s. With the possibility of a donation of the rope tow, we are looking for background materials that give context and a back story to this unique donation.

Please contact our curator with photos or stories at: info@pembertonmuseum.org

ARE YOU A MUSEUM MEMBER?

The Pemberton Museum is a non-profit organization that relies on the support of our community to keep our line-up of fun events and activities running and our collection and site maintained. By becoming a member, you will be kept up to date with historical happenings and contribute to the preservation of the history of Pemberton and the surrounding district.

We provide charitable receipts for cash and in-kind donations.

Individual Memberships - \$20

Family Memberships - \$25

HOST YOUR SPECIAL EVENT AT THE MUSEUM

Are you searching for a unique and charming venue to host your next event? Look no further than the Pemberton Museum where the past comes alive in the present!

We love welcoming our community to the site and helping residents and local businesses host events and activities for all types of occasions and celebrations. Whether it's a board meeting for your not-for-profit, professional development workshop for your staff, or a Harry Potter inspired birthday party, we are here for you! Our affordable prices are customized for your event. Send us a description of your event, preferred date and time, number of guests and if you plan to serve food and beverages. Email us at: info@pembertonmuseum.org



A very happy birthday to Maria Gartner, who hosted a Harry Potter themed party for her 11th birthday!

at Meagher Creek

Canada's first geothermal power possibility here

Encouraging test results from exploratory drilling near Meagher Creek indicate a significant geothermal potential which could ultimately lead to Canada's first geothermal power generating plant.

Geothermal power uses steam trapped beneath the earth's surface to drive electrical generators.

Engineers investigating the geothermal power potential on the south side of the Meagher Mountain volcanic complex, near Pemberton, reached temperatures of 139°C at a depth of 305 metres (m) at the first of six exploratory holes planned for this year.

Joe Stauder, generation planning engineer for B.C. Hydro, said that initial results indicate the possibility of a steam reservoir at a depth of less than 1600 m.

If combined with adequate

pressure and flow, this would be sufficient for an electric generating station, Stauder said.

The next stage in the investigations involves drilling exploratory wells about four times the size of the present slim exploratory holes.

Before production wells can be considered, tests on the exploratory wells would have to approximate the following criteria: surface steam temperatures of 180°C or more; pressures of 600-700 kilopascals (kpa); and about 50,000 kilograms (kg) of steam per hour.

If production wells are drilled, a demonstration plant with a capacity of 50 to 100 megawatts could be considered.

Crews conducting resistivity tests in the northern part of the complex have also encountered

encouraging results of low resistivity, indicating considerable fracturing and the possible presence of a natural hot water reservoir.

Drilling and geophysical studies, funded jointly by B.C. Hydro and the federal and provincial governments, have been going on in the Meagher Creek area since 1974.

Environmental studies, begun in 1978, are continuing this year.

Technical reports on the field work and on the environment of the Meagher Creek geothermal area will be distributed to government agencies and libraries shortly.

An information bulletin, outlining the history and development of the project, is in preparation and will be available to the public in the near future.

Housing is main problem in Pemberton

The Pemberton Valley Labour Force Development Committee is moving ahead on its study of the needs of the people of Pemberton.

Problems to be looked at will be the lack of housing, the turnover rate of 235 per cent a year at the Evans Products sawmill and the lack of social amenities for the 3,500 people in the valley.

These problems are complicated because of federal government funding for the Indian areas and provincial government funding for the non-Indian areas.

The committee has sent experts to the farms seeking out farmers' grievances and asking them to help find remedies as well as concerning itself with the sawmill operation and workers.

Chairman of the committee W.C. Wedley, a Simon Fraser university professor commented favourably on the relationship between Evans Products, the

union and the people of Pemberton.

Between 30 and 40 per cent of the workers at Evans Products are Indians and women are being employed in jobs that are usually done by men in sawmills. A \$250,000 planing machine has been installed in spite of the company's grim profit picture and upgraded job opportunities have been able to be offered to many of the workers.

Mount Currie Chief, Allan Stager, a member of the committee, has plans for the Indian community which could include a co-operative cattle ranch and the contract production of vegetables.

Mayor Gordon Sangster would like to see a new municipal set-up that will expand Pemberton to the limits of the Mount Currie Reserve, giving it the kind of tax base needed for developments he feels should come.

The committee will be con-

cerned with providing hospital facilities and looking at the use that can be made of Crown Land for housing as 50 new housing units are needed immediately.

An ice rink is another facility which the community is working on.

PEMBERTON GETS CROWN LAND FOR AIRPORT

The provincial government will provide the Village of Pemberton with free Crown land for use as a municipal airport, Lands, Parks and Housing Minister Jim Chabot announced last week.

The 33 hectare site is located three miles southeast of the Village of Pemberton, between the Lillooet River and Green

PEMBERTON BUSINESS DIRECTORY

PEMBERTON & DISTRICT CO-OPERATIVE ASSOCIATION
Valley Farmers' Store

Ph. 894-6353

Hours 9-6
Closed Mondays

Honor Scrolls to Pemberton Valley

Centennial Scrolls of Honor presented to citizens who have been of community service to Pemberton and district were given out by Willard Ireland, secretary of the B.C. Centennial Committee, at the opening of the Miniature Health Center, August 27.

Those honored were Arthur Rhodes Mawbey, Mrs. M. Shantz, John Ronayne Sr., Mrs. A. C. Taylor, Mrs. Sarah Purden, Mrs. Lloyd Shore, Mrs. Nelson Fraser, Edmund Ronayne, R. H. E. Taylor, Harold Wyatt-Purden, Mr. and Mrs. Alex Phillip, Felix Sam, Elizabeth Ros, and Sammel Spetch.

Living in an isolated community for many years, a history of these people proves them to have been very self-reliant and ever willing to help their neighbors in sickness and other need.

SUMMERTIME FUN - FROM THE ARCHIVES



Photos CW:

Paddling on Lillooet Lake.
From left: Jimmy Decker, T.
Fougberg, Johnny Decker,
Johnny Ronayne; Rosemary
Decker on step with her dog
and cat; Horses grazing along
stream in a Mountain
Meadow; Sonny Tayler
operating the longboat "Old
Lillooet Lady" (P.F.R.A. River
Boat); Jack Ronayne paddling
the family.

